



Identity security is now a breeze

Linx is the AI-native identity security platform to see, govern, and fix every identity risk across human, non-human, and agentic identities.

Identity management gets more complicated with every employee, contractor, NHI and AI agent. Every access change, organizational movement, or M&A, potentially expands the attack surface. Identity security teams are expected to keep the business moving fast, while keeping it secure, but today's tools are hard to use, move too slow, and typically stop at creating tickets.

It's time for modern identity security.

Ensure the right identities, have the right access, to the right resources, at the right time.



Identity visibility & intelligence

See every human, non-human, and AI agent identity, spot dormant accounts, admin sprawl, and other identity risks across SaaS, cloud, and on-prem.



Lifecycle governance

Automate JML, UARs, and access requests with AI recommendations so auditors get clean evidence without months of manual work.



Automation & remediation

Remediate partially offboarded users, unused entitlements, and risky accounts directly in Okta, AD, and SaaS apps, no tickets to other teams.

Why busy teams choose Linx



Unified Security & Governance

Replaces a patchwork of IGA + ISPM + scripts with one platform that can see and fix identity risk.



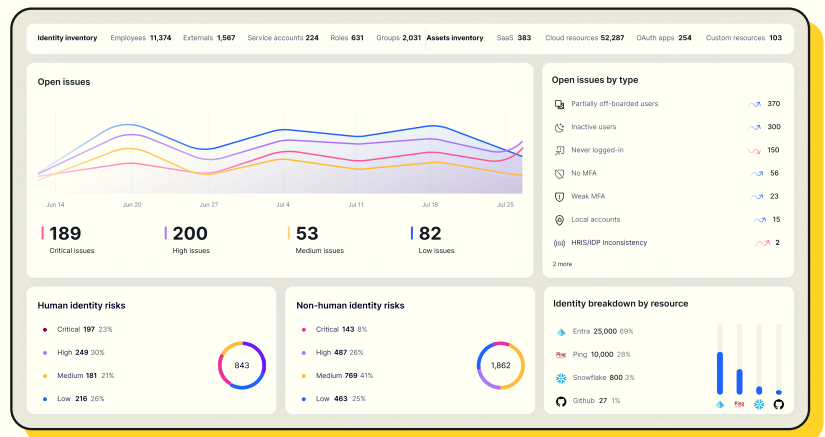
Day One Value

Out of the box functionality without the need for lengthy training or professional services.



Power Tool For Busy Users

Built so admins, approvers and app owners can act without having to be certified on five different tools.



"Linx is revolutionizing the identity security and governance space. Legacy IGA can be overwhelming in both cost and effort resulting in diminishing or even negative ROI."

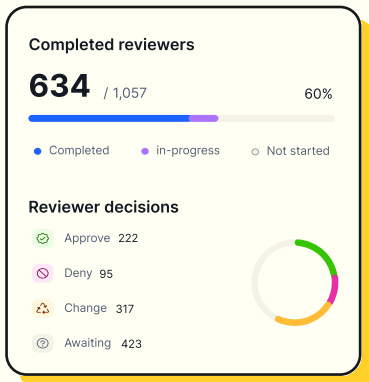


Jeff Farinich
SVP Technology & CISO,
New American Funding



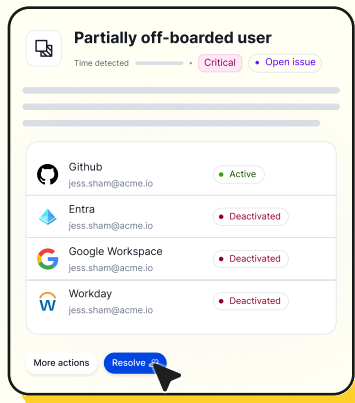
Modern Identity Governance & Administration (IGA)

Orchestrate access requests, approvals, and provisioning across SaaS, cloud, and on-prem, with AI-guided decisions and automated user access reviews that keep audits fast and clean.



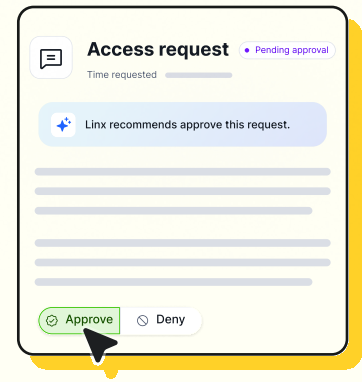
Identity Security Posture Management (ISPM)

Continuously map every identity, entitlement, and resource to surface dormant accounts, admin sprawl, SSO bypass, and missing MFA, and use remediation to fix issues without relying on other teams.



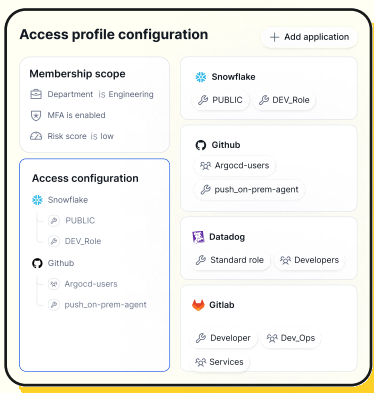
Just-In-Time Access

Replace standing privileges with time-bound, right-sized access. Linx AI evaluates each request for risk and recommends approve/deny so approvers can move fast without adding risk.



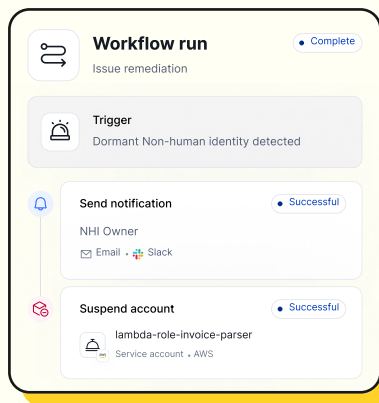
Identity Lifecycle Management

Automate JML flows and enforce least-privilege through role and attribute based access. Reliably grant access or strip excess entitlements as people change roles or leave, to keep employees and agents productive without adding risk.



Non-human & Agentic Identity Governance

Discover and govern service accounts, API keys, bots, and AI agents in one graph, enforcing least privilege and JIT while tying every non-human identity to an owner, purpose, and full audit trail.



"As a former CRO of SailPoint, I am excited by Linx's innovative approach to identity security and governance. Their use of cutting-edge technologies are truly revolutionizing the space and setting a new standard for the industry."



Howard Greenfield
Former CRO SailPoint

Ready to explore modern identity security?

[Get a demo](#)

